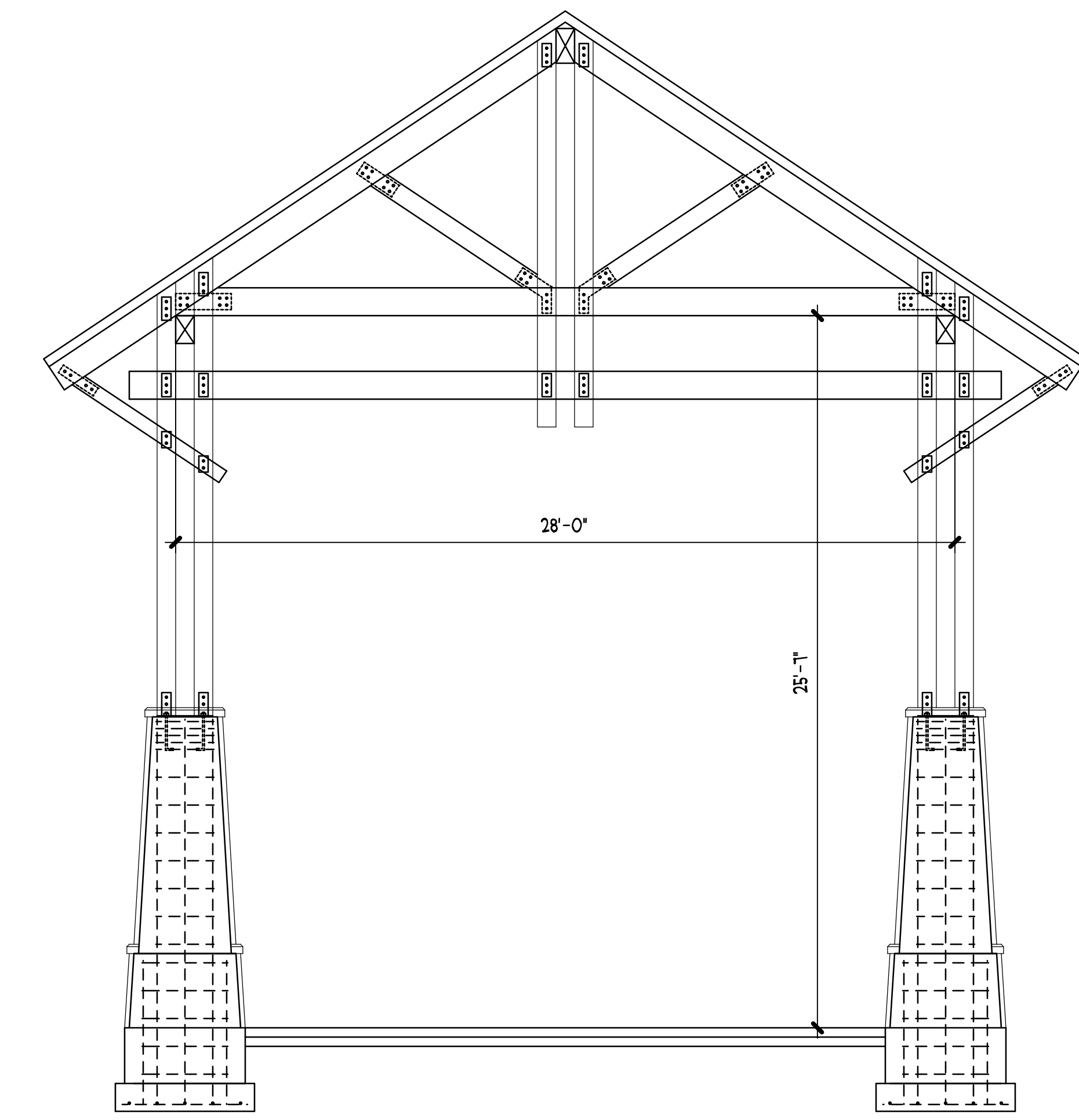
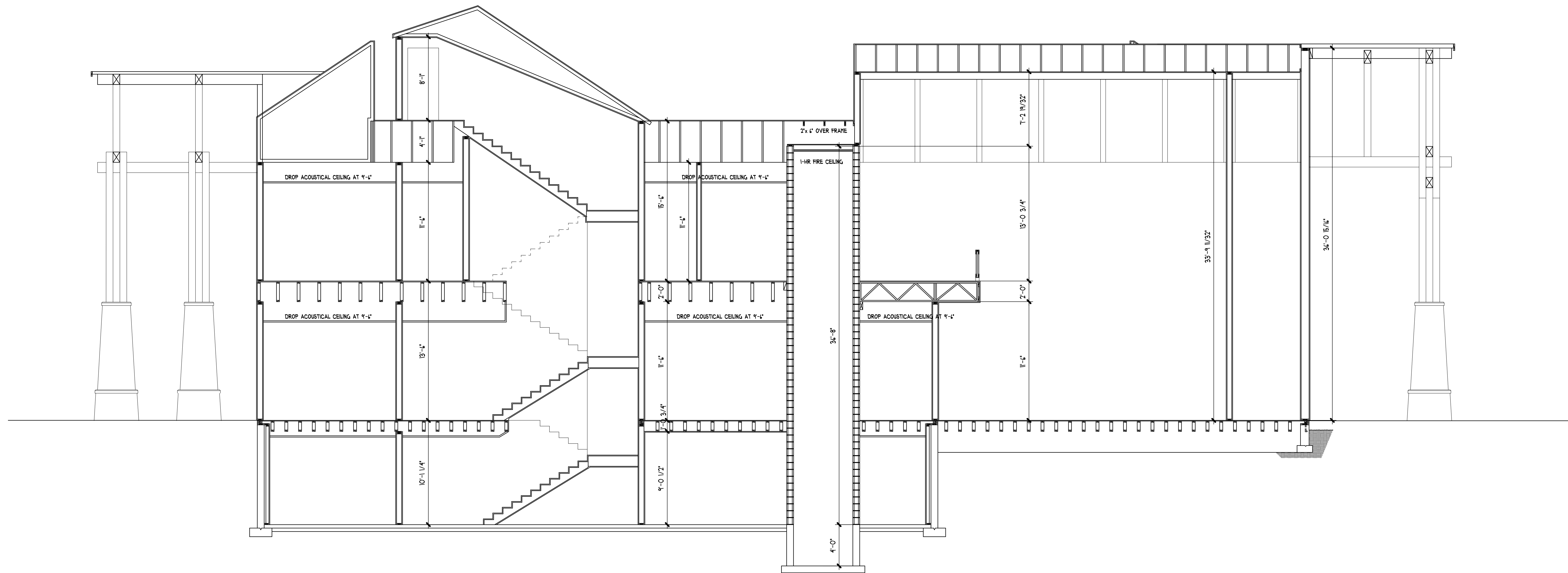


SECTION A~A  
SCALE: 1/4" = 1'-0"



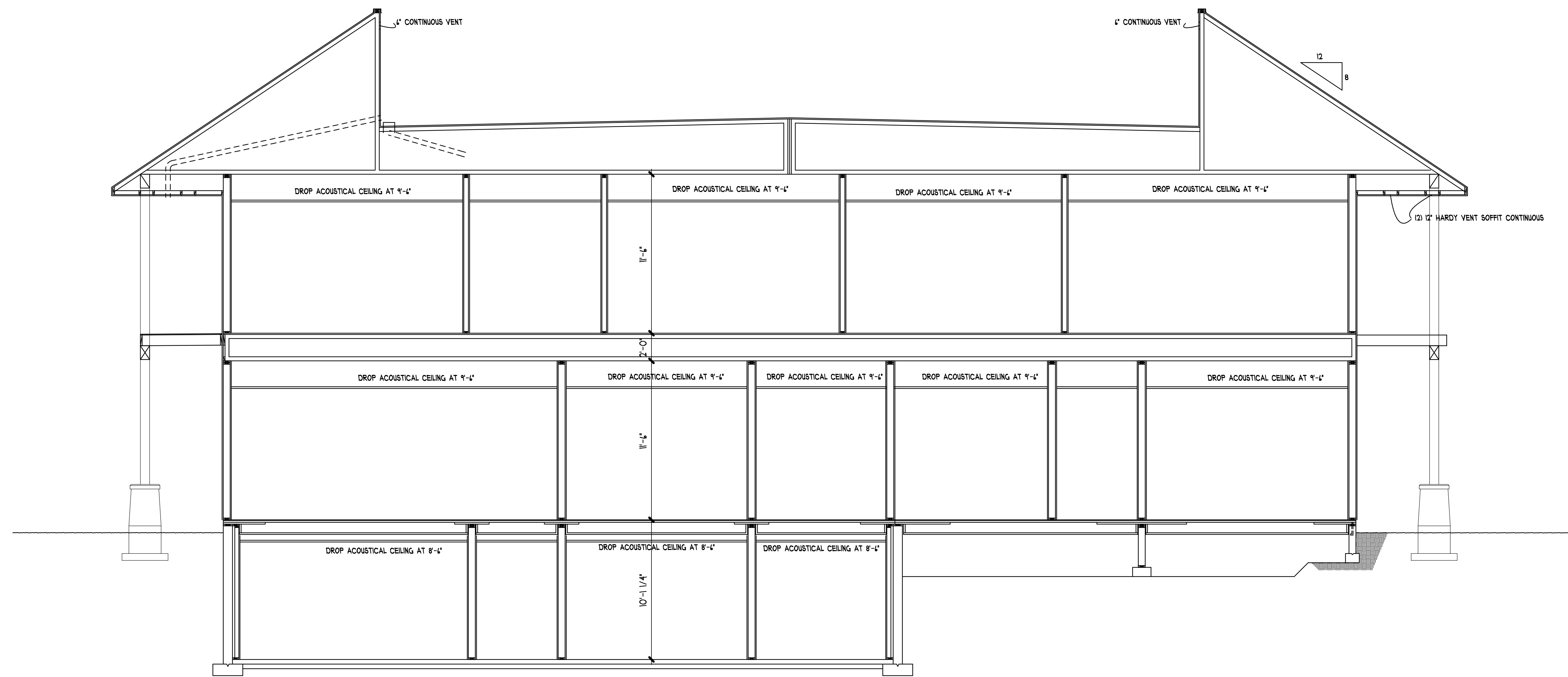
SECTION C~C  
SCALE: 1/4" = 1'-0"



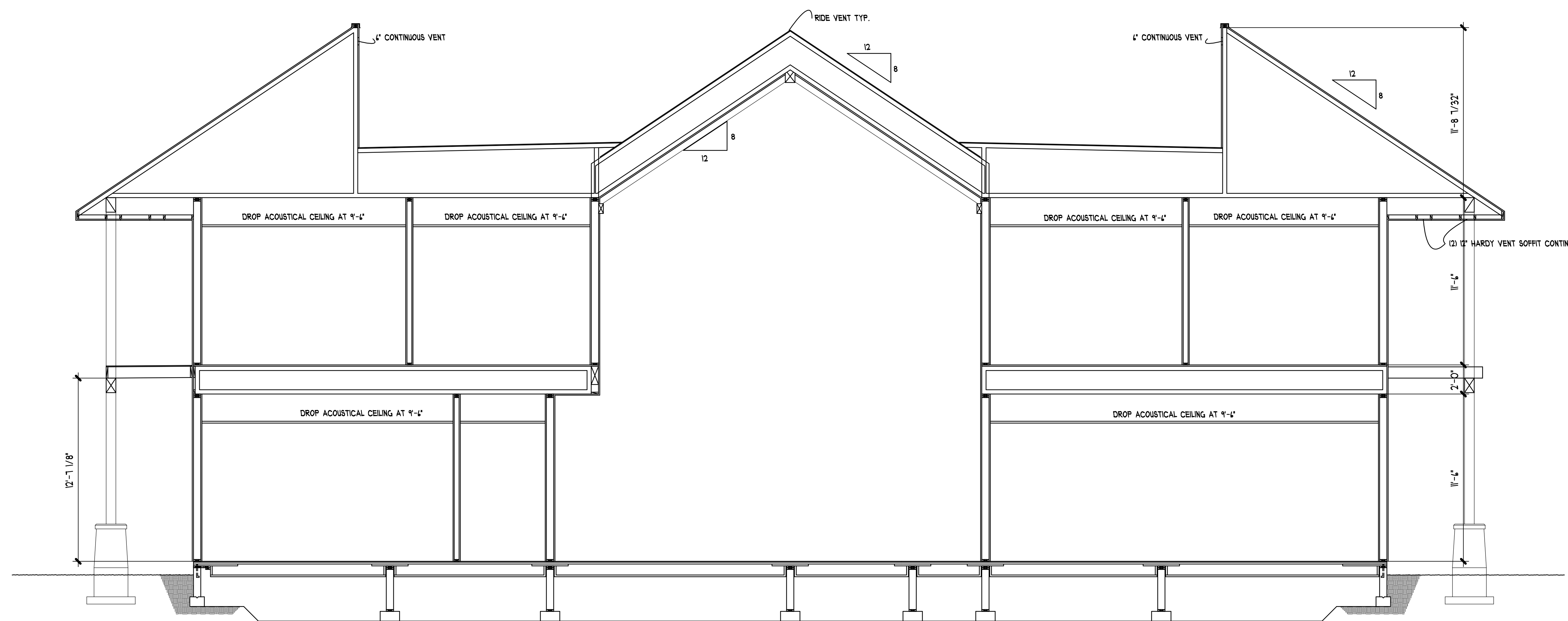
SECTION B~B  
SCALE: 1/4" = 1'-0"

DATE: 06/30/10	PLAN# P9-10068
REVISED	SHEET NUMBER
▲	9
▲	OF
▲	22
▲	
▲	

© COPYRIGHT 2007 PROFESSIONAL DESIGN, INC.



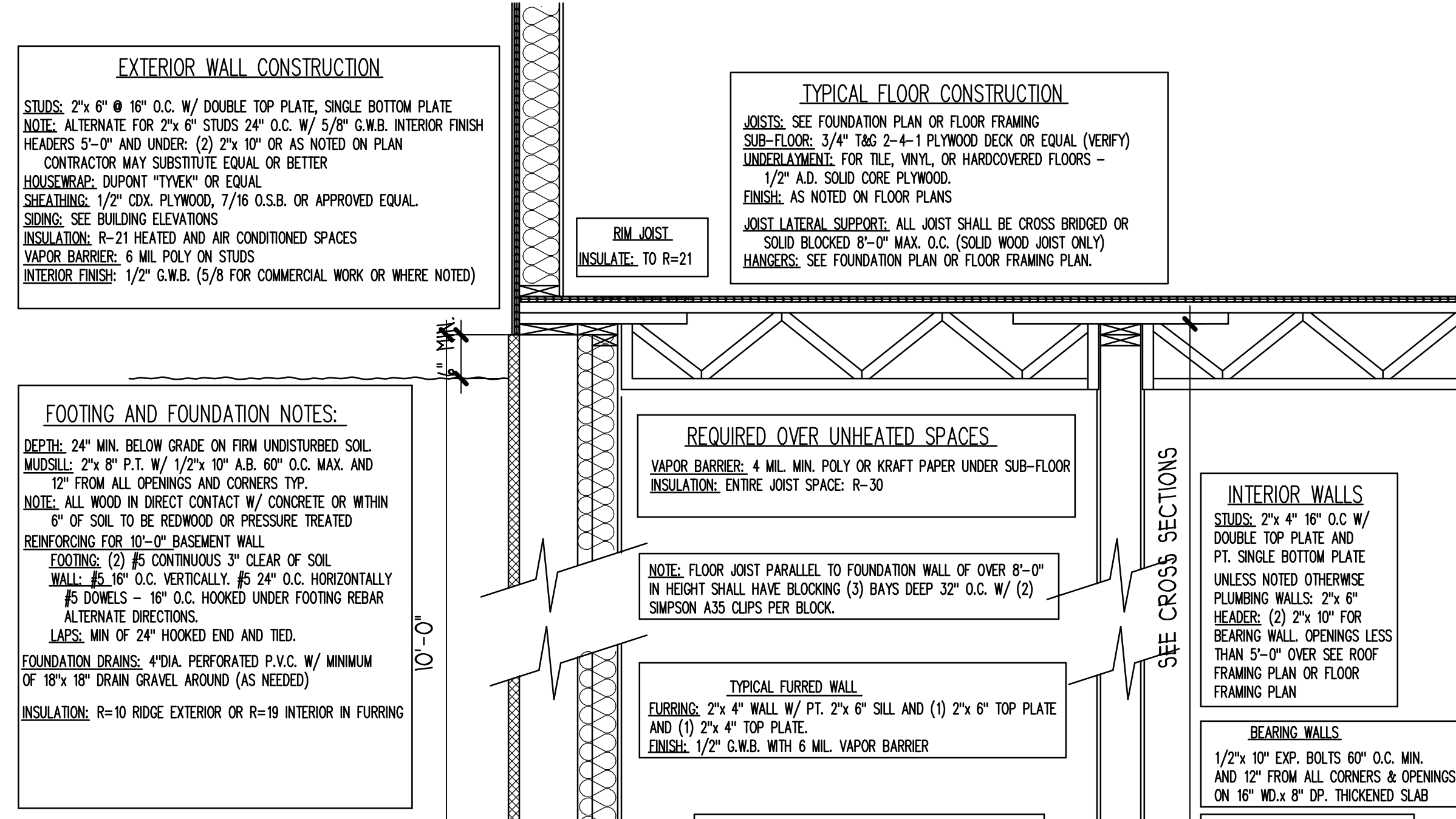
SECTION E~E  
SCALE: 1/4" = 1'-0"



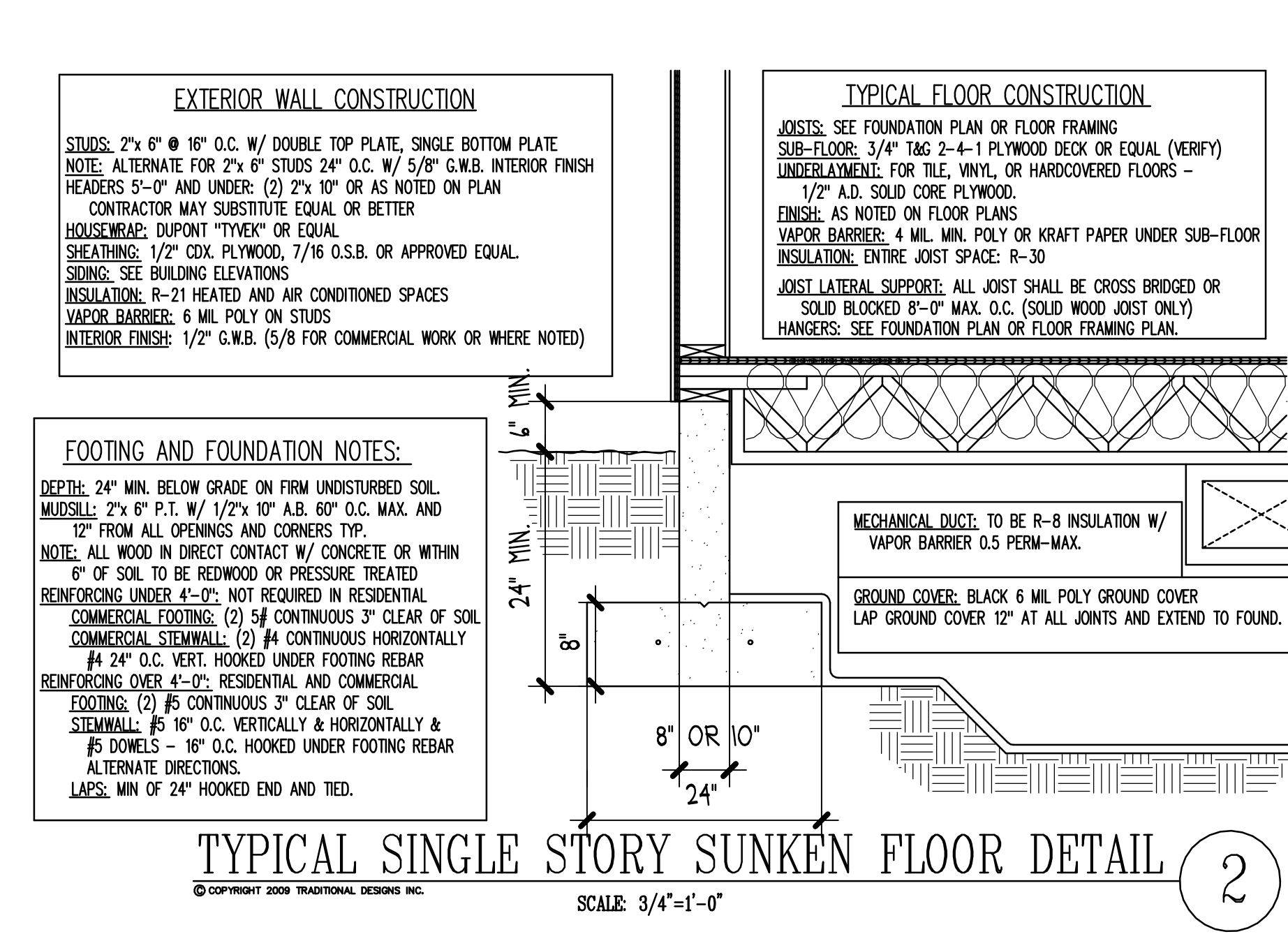
SECTION D~D  
SCALE: 1/4" = 1'-0"

DATE: 06/30/10	PLAN# P9-10068
REVISED	SHEET NUMBER
<ul style="list-style-type: none"> <li>▲</li> <li>▲</li> <li>▲</li> <li>▲</li> <li>▲</li> </ul>	10 / OF 22

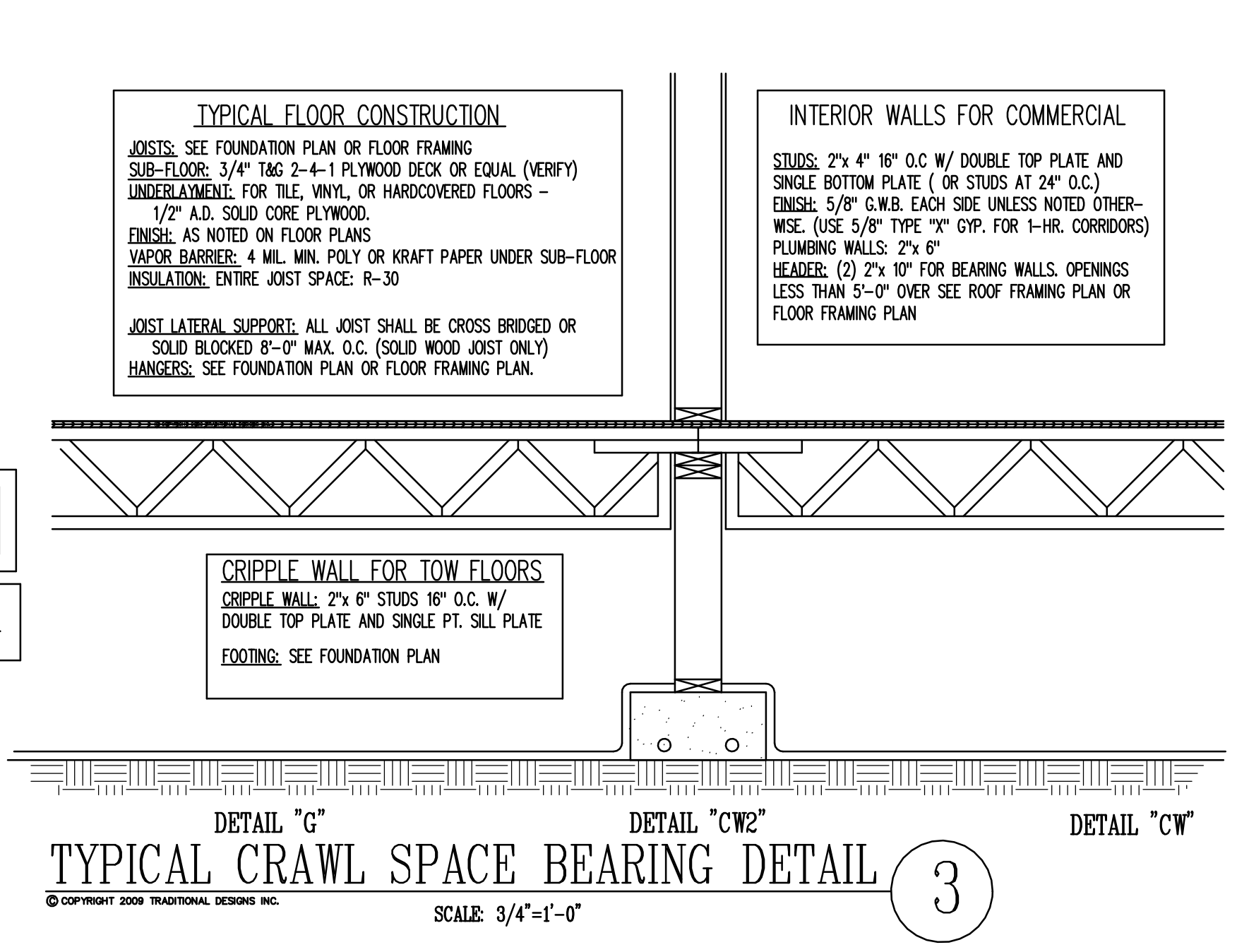
© COPYRIGHT 2007 PROFORMAL DESIGN, INC.



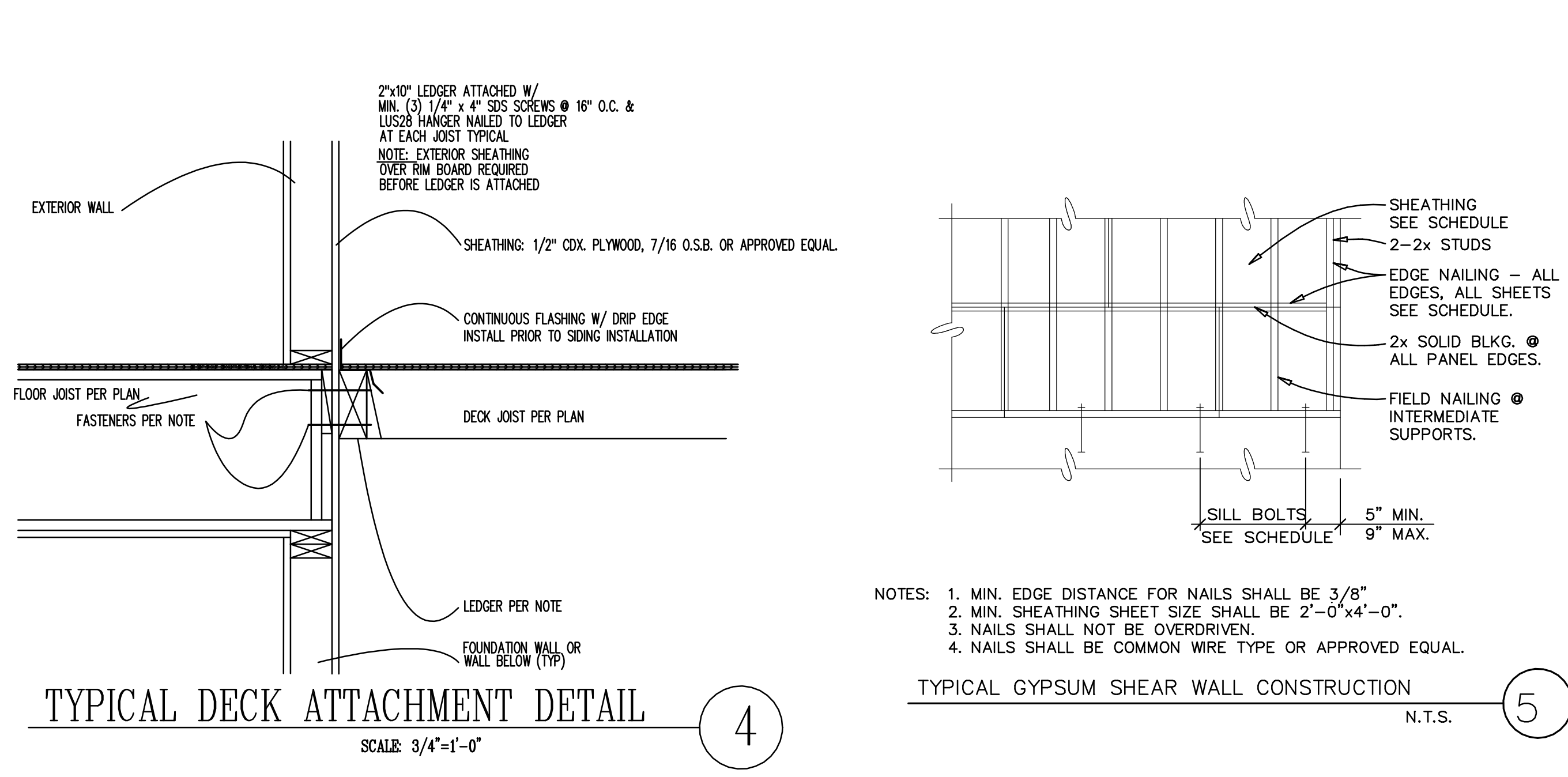
TYPICAL 10'-0" BASEMENT WALL DETAIL SUNKEN FLOOR JOISTS



TYPICAL SINGLE STORY SUNKEN FLOOR DETAIL

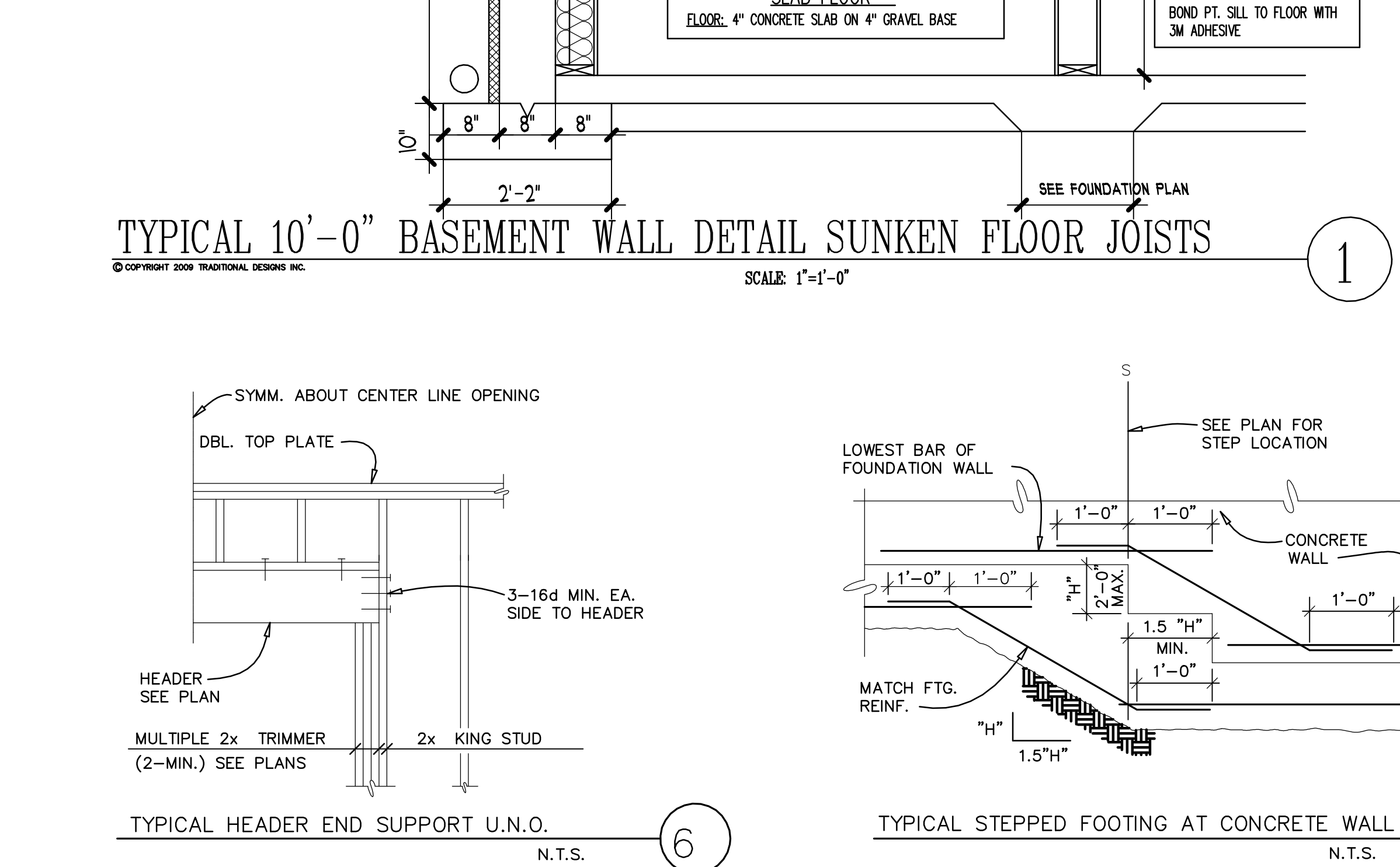


TYPICAL CRAWL SPACE BEARING DETAIL



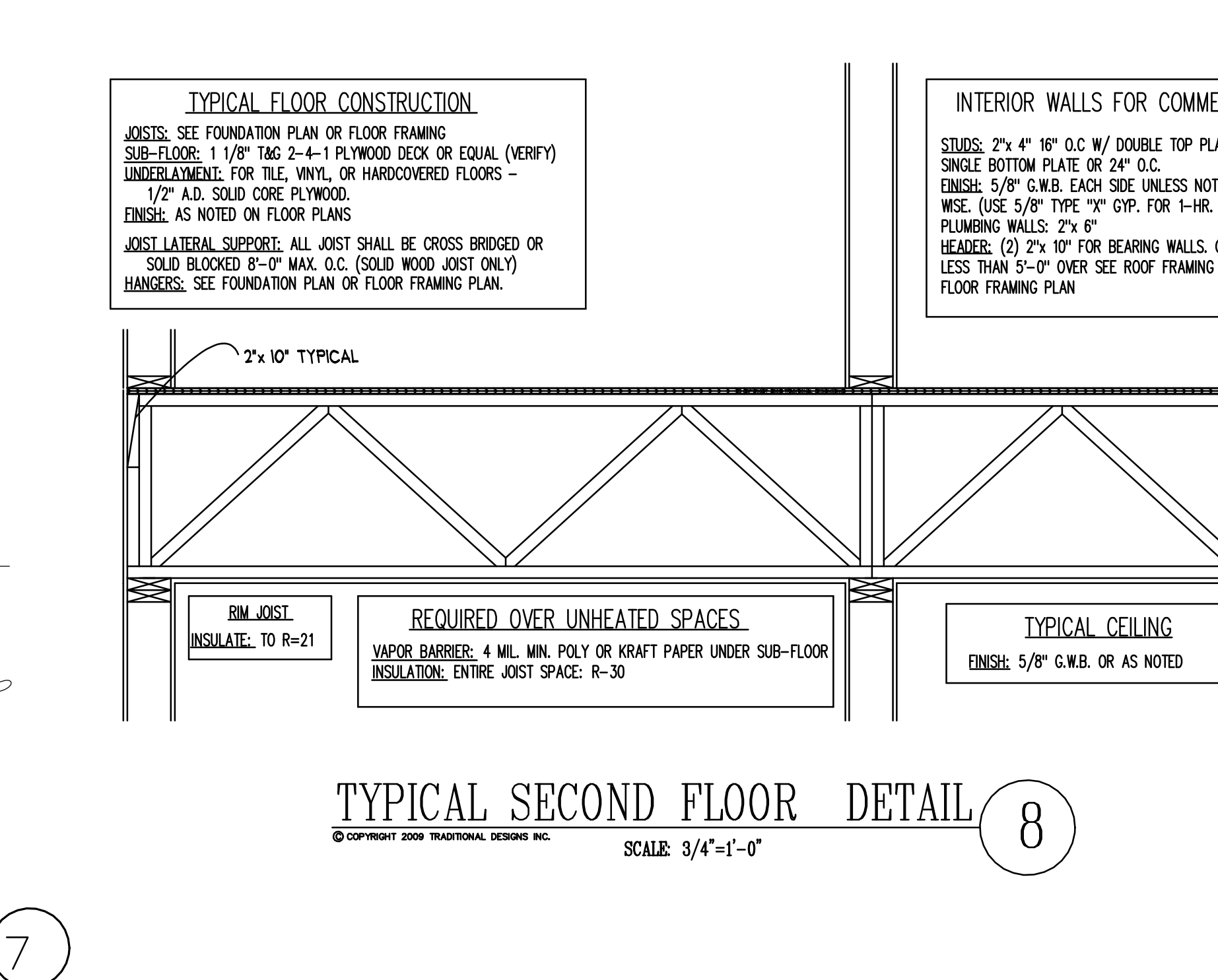
TYPICAL DECK ATTACHMENT DETAIL

TYPICAL GYPSUM SHEAR WALL CONSTRUCTION

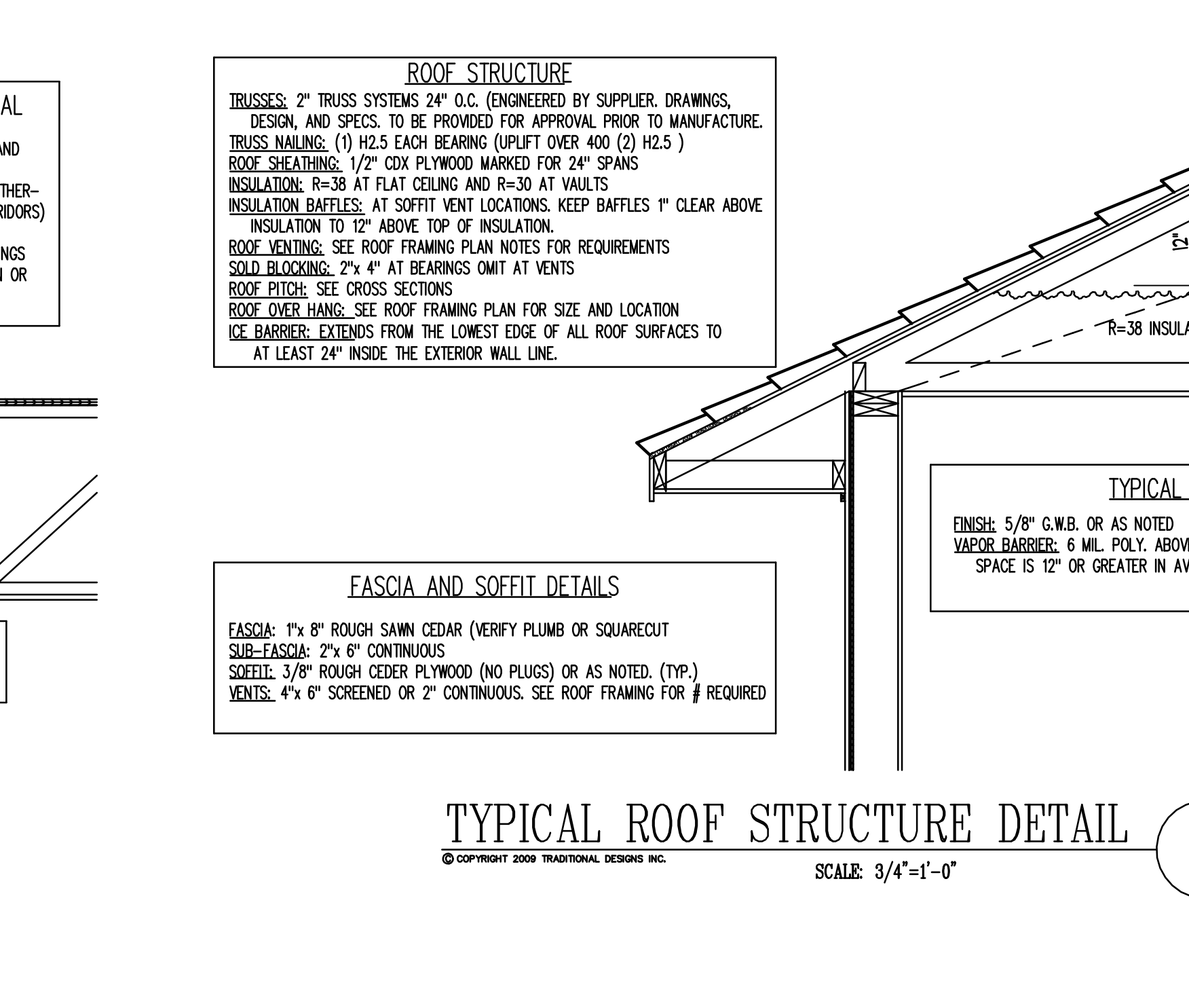


TYPICAL HEADER END SUPPORT U.O.

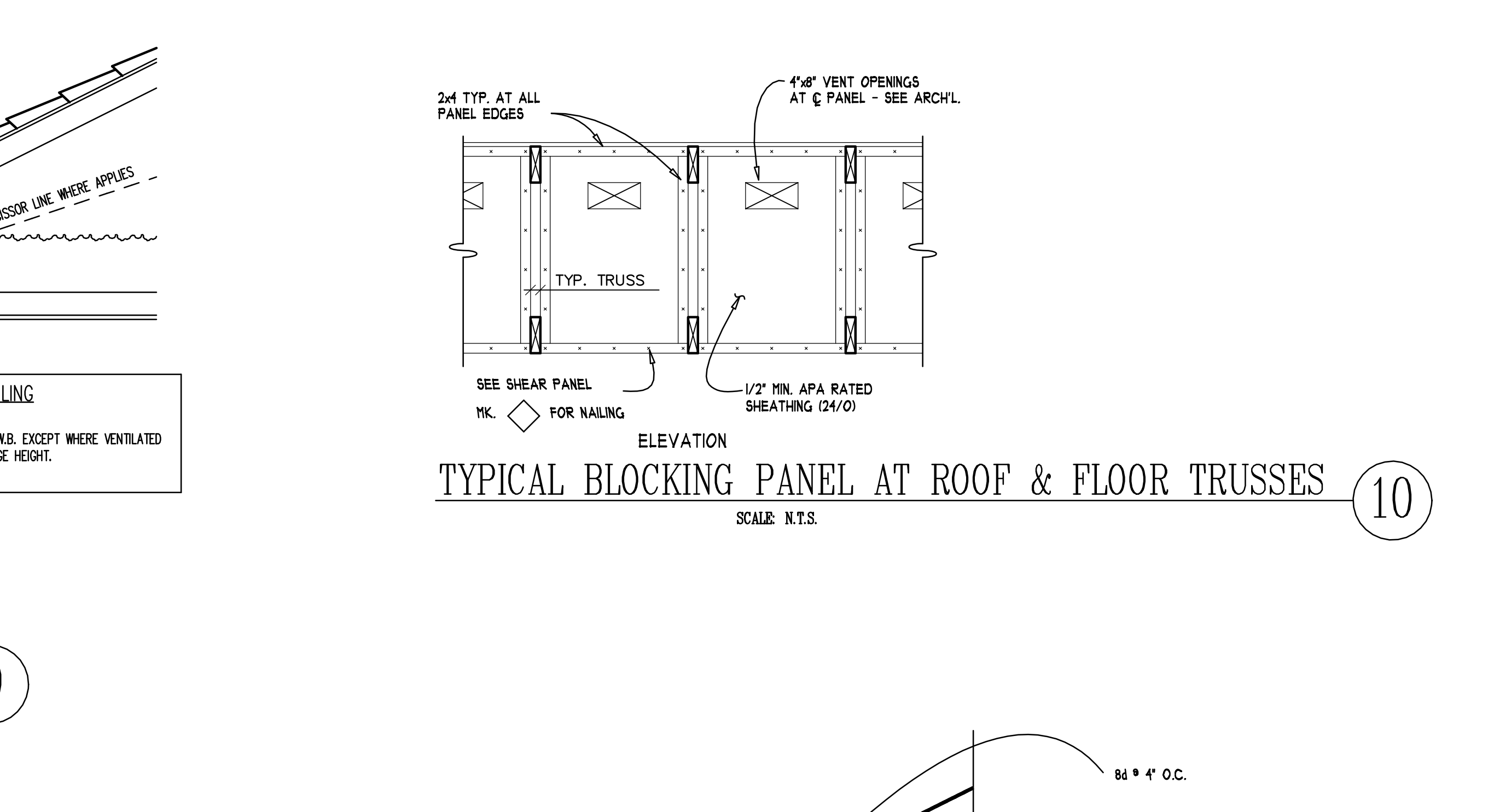
TYPICAL STEPPED FOOTING AT CONCRETE WALL



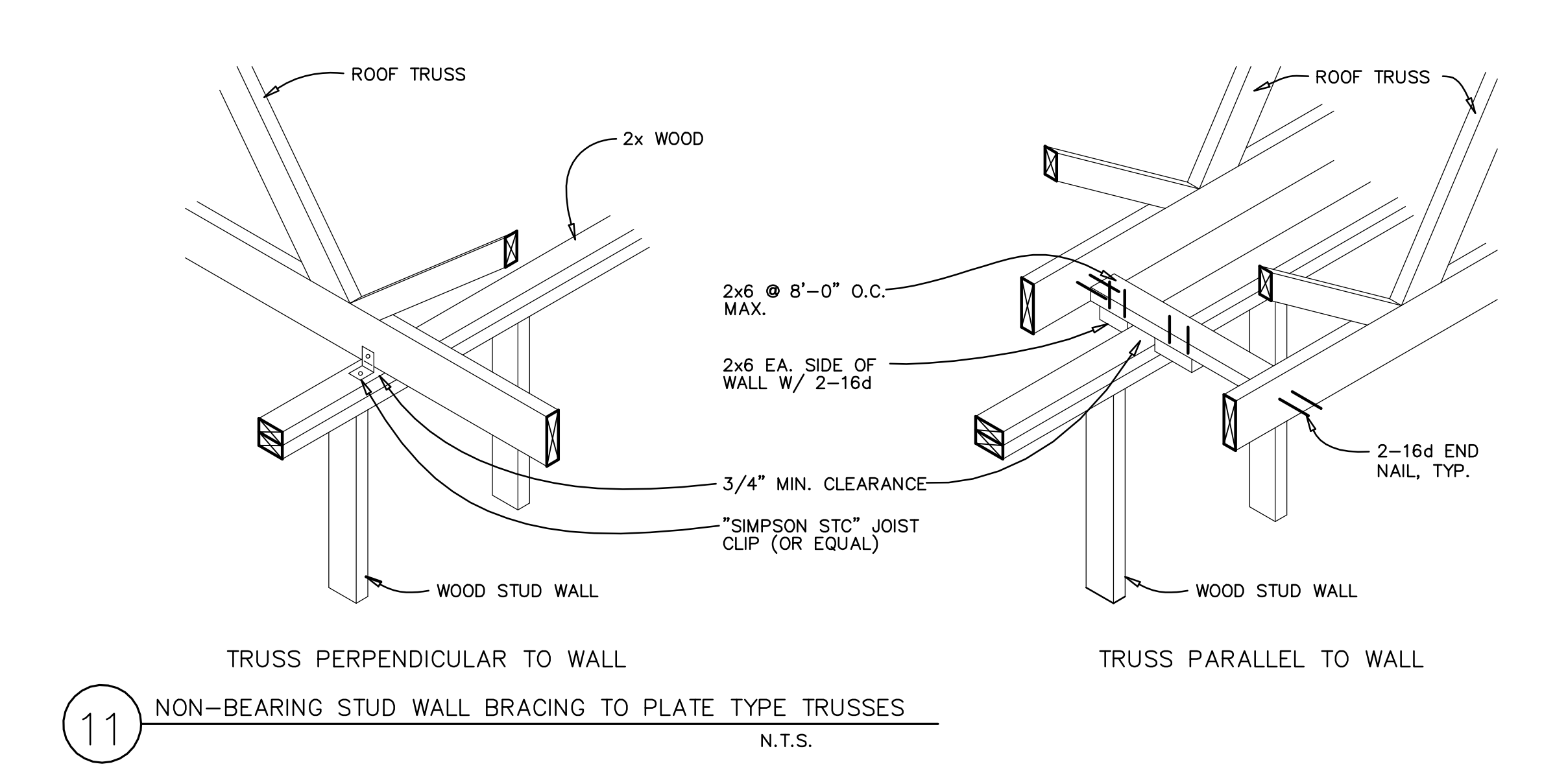
TYPICAL SECOND FLOOR DETAIL



TYPICAL ROOF STRUCTURE DETAIL



TYPICAL BLOCKING PANEL AT ROOF & FLOOR TRUSSES

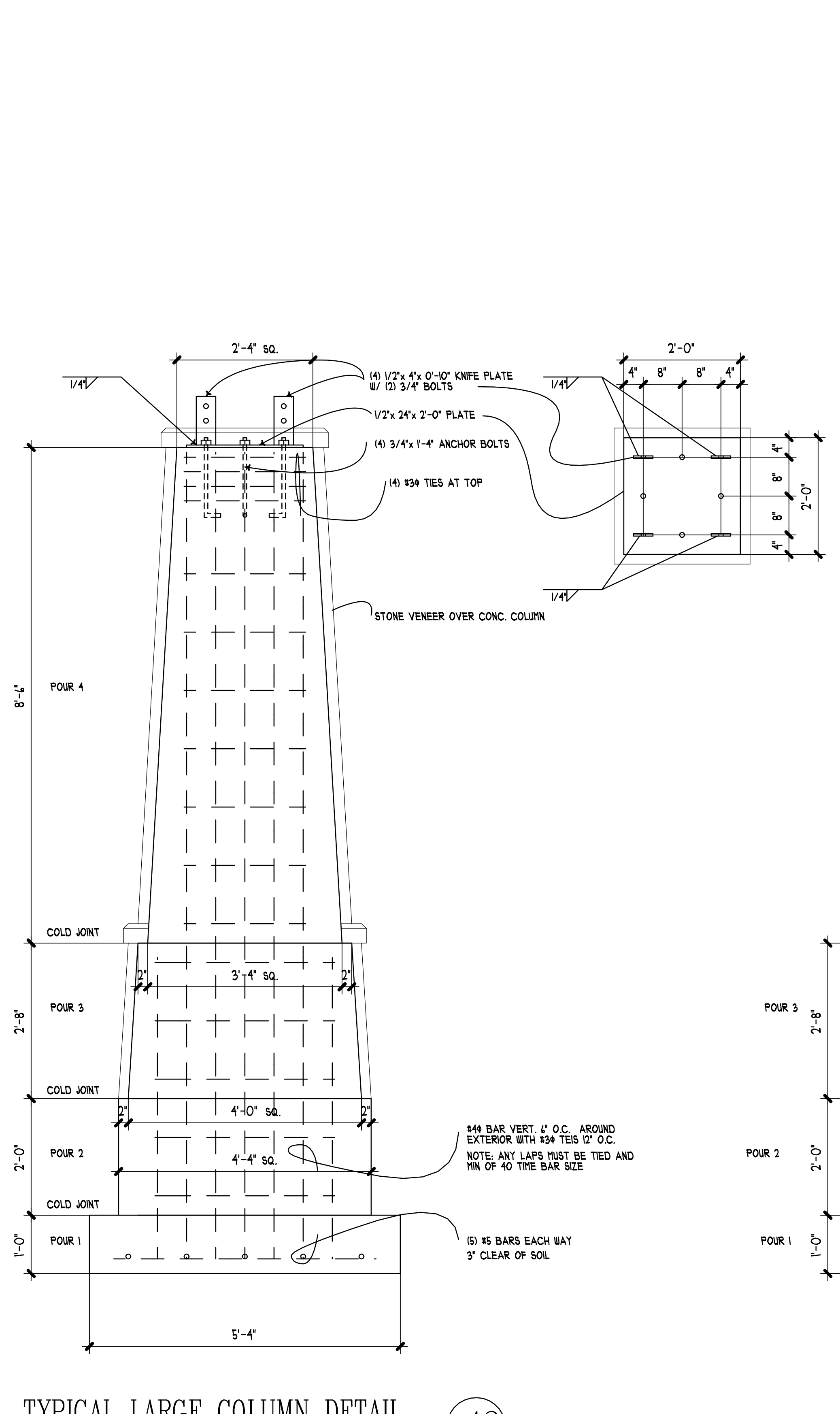


TRUSS PERPENDICULAR TO WALL

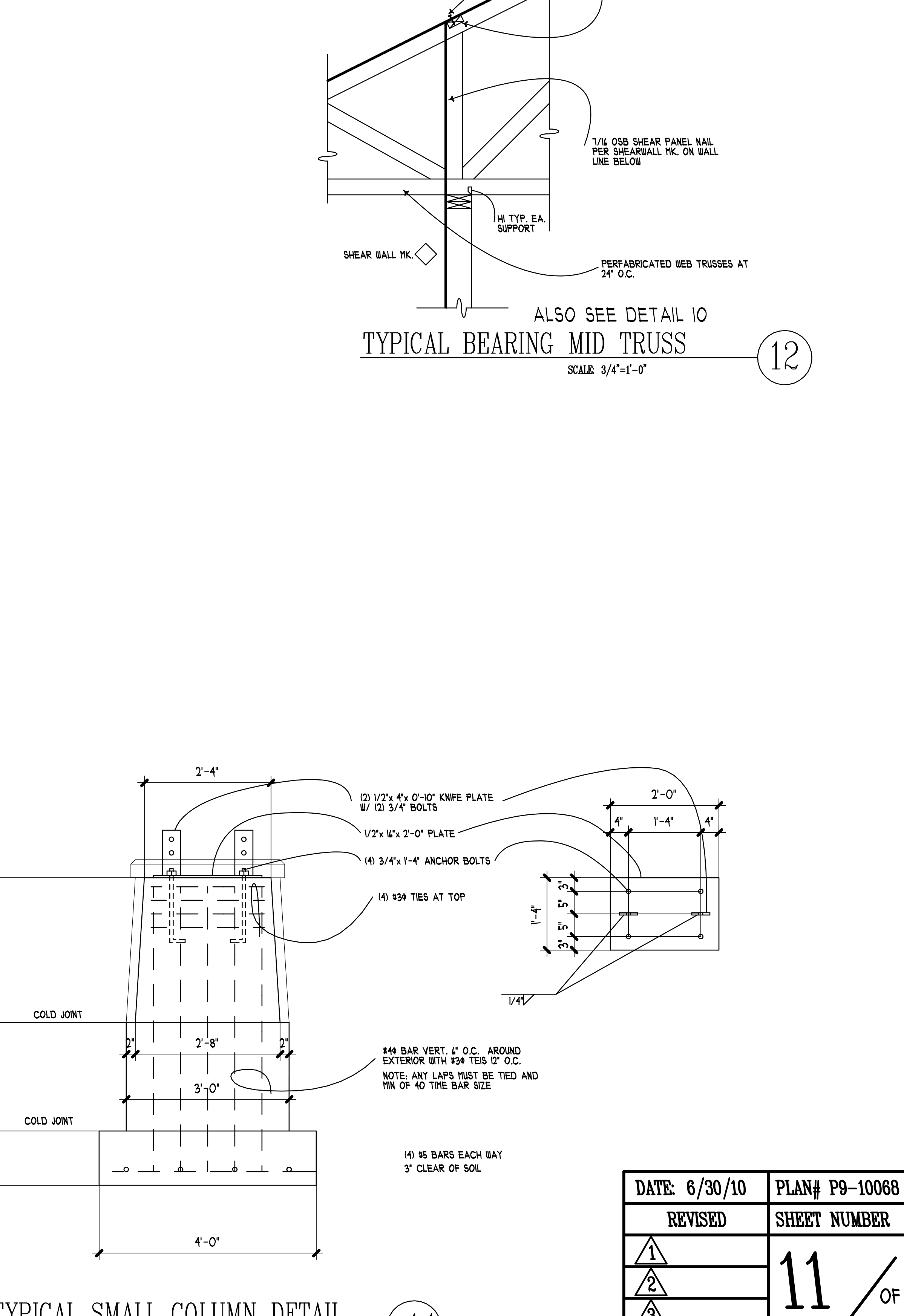
TRUSS PARALLEL TO WALL

ROOF-CEILING SYSTEMS			
GA FILE NO. RC 2602	GENERIC	1 HOUR FIRE	
WOOD TRUSSES, GYPSUM WALLBOARD			
Base layer 5/8" type X gypsum wallboard applied at right angles to wood roof trusses 24" o.c. with 1 1/4" Type W or S drywall screws 24" c.c. Face layer 5/8" type X gypsum wallboard or gypsum veneer base applied at right angles to trusses with 1 1/4" Type W or S drywall screws 12" o.c. at joints and intermediate trusses and 1 1/2" Type G drywall screws 12" o.c. placed 2" back on either side of end joints. Joints offset 24" from base layer joints. Wood trusses supporting 1/2" wood structural panels applied at right angles to trusses with 8d nails. Appropriate roof covering. Ceiling provides one hour fire resistance protection for trusses.			
Approx. Ceiling Weight: 5 psf Fire Test: FM FC 172, 2-25-72; ITS, 8-8-88			
FLOOR-CEILING SYSTEMS, WOOD FRAMED			
GA FILE NO. FC 5408	GENERIC	1 HOUR FIRE	35 TO 39 STC SOUND
WOOD TRUSSES, GYPSUM WALLBOARD			
Base layer 5/8" type X gypsum wallboard applied at right angles to parallel chord wood trusses 24" o.c. with 1 1/4" Type W or S drywall screws 24" c.c. Face layer 5/8" type X gypsum wallboard or gypsum veneer base applied at right angles to trusses with 1 1/4" Type W or S drywall screws 12" o.c. at joints and intermediate trusses and 1 1/2" Type G drywall screws 12" o.c. placed 2" back on either side of end joints. Joints offset 24" from base layer joints. Trusses supporting 1/2" wood structural panels applied at right angles to trusses with 8d nails. Ceiling provides one hour fire resistance protection for trusses.			
Approx. Ceiling Weight: 5 psf Fire Test: FM FC 172, 2-25-72; ITS, 8-9-98 Sound Test: Estimated			

WALLS AND INTERIOR PARTITIONS, WOOD FRAMED			
GA FILE NO. WP 3514	GENERIC	1 HOUR FIRE	35 TO 39 STC SOUND
GYPSUM WALLBOARD, WOOD STUDS			
One layer 5/8" type X gypsum wallboard or gypsum veneer base applied parallel or at right angles to each side of 2 x 4 wood studs 16" o.c. with 1 1/4" Type W drywall screws 12" c.c. Joints staggered 16" on opposite sides. (LOAD-BEARING)			
Thickness: 4 1/4" Approx. Weight: 7 psf Fire Test: SVIRI D1-4511-619(1) 3-84 See WP 3520 Sound Test: (G&H) NG-246FT, 7-2-85			
GA FILE NO. WP 3660	GENERIC	1 HOUR FIRE	
GYPSUM WALLBOARD, WOOD STUDS			
One layer 5/8" type X gypsum wallboard applied at right angles to each side of 2 x 6 wood studs 16" o.c. with 1 1/4" Type S or W drywall screws 7" o.c. Vertical joints staggered 18" c.c., horizontal joints staggered 24" c.c., on opposite sides. Tested at 5,155 lbs per stud or 100 percent of design load. (LOAD-BEARING)			
Thickness: 6 1/4" Approx. Weight: 8 psf Fire Test: ITS J59-22441.2, 10-99			

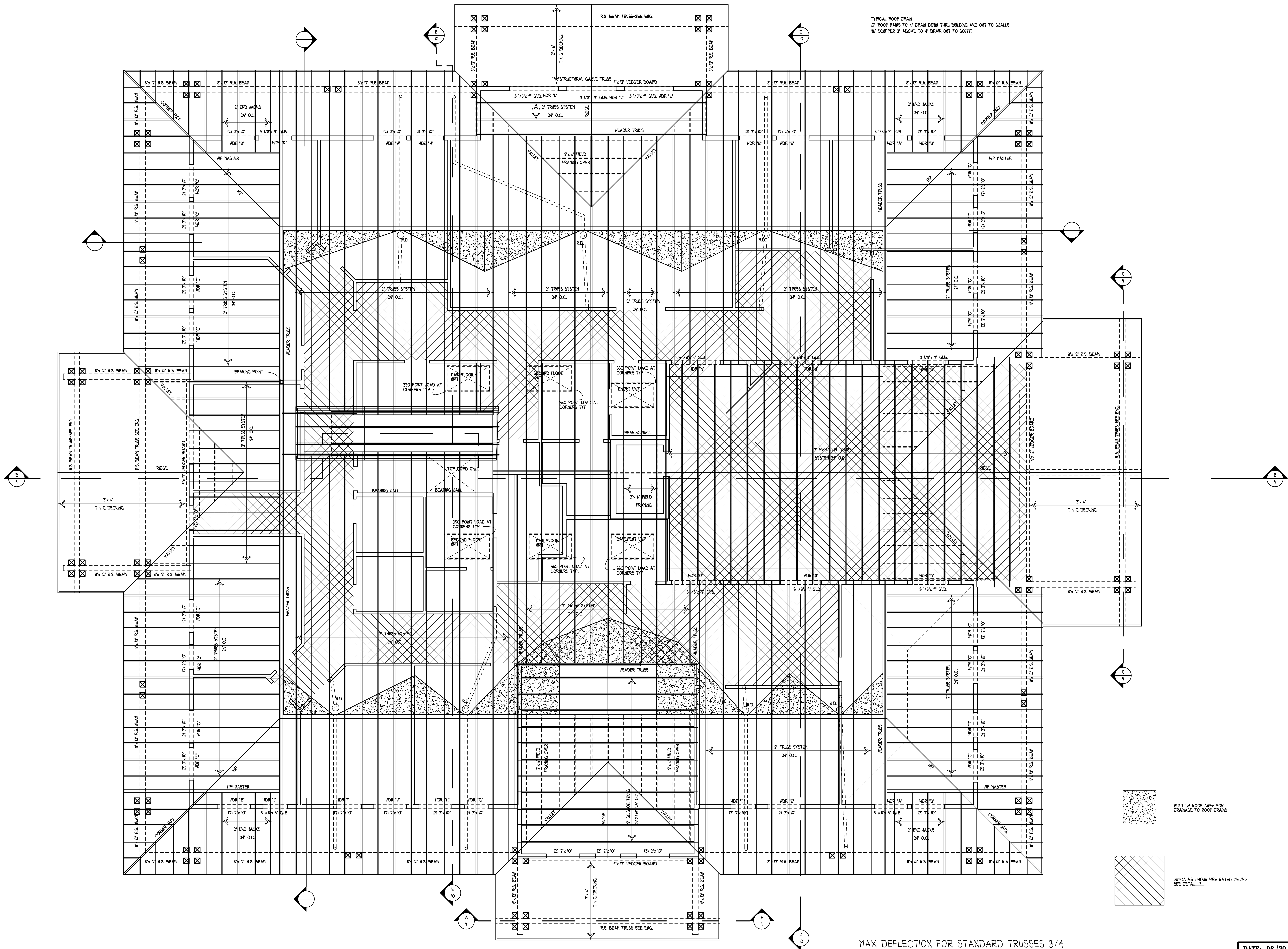


TYPICAL LARGE COLUMN DETAIL



TYPICAL SMALL COLUMN DETAIL

DATE: 6/30/10	PLAN# P9-10068
REVISED	SHEET NUMBER
11	OF 22



TYPICAL ROOF DRAIN  
 12" ROOF RAINS TO 4" DRAIN DOWN THRU BUILDING AND OUT TO WALLS  
 6" SCOPPER 2" ABOVE TO 4" DRAIN OUT TO SOFFIT

BUILT UP ROOF AREA FOR DRAINAGE TO ROOF DRAINS

INDICATES 1 HOUR FIRE RATED CEILING SEE DETAIL 7

MAX DEFLECTION FOR STANDARD TRUSSES 3/4"

— MANUFACTURED TRUSS SYSTEM  
 — MANF. SCISSOR TRUSS SYSTEM  
 — MANF. STEPPED TRUSS SYSTEM  
 --- FIELD FRAMING: 2x4 @ 24" O.C.  
 HANDED SPAN 8'-0" BRACE TO BEARING WALL OR TRUSS BELOW

TRUSS TO SUPPLIED BY TRUSS MFG. TRUSS MFG. REQUIRED TO SUPPLY ALL BRACING REQUIRED AND AN TRUSS CONNECTIONS FOR TRUSS TO TRUSS CONNECTIONS AND TRUSS TO BEAM HANGERS. TRUSS CONTRACTOR TO VERIFY ALL FIELD FRAMING HANGERS IF NEEDED AND TRUSS TO BEAM HANGERS. TRUSS CONTRACTOR TO VERIFY ALL FIELD FRAMING HANGERS IF NEEDED AND TRUSS TO BEAM HANGERS. TRUSS CONTRACTOR TO VERIFY ALL FIELD FRAMING HANGERS IF NEEDED AND TRUSS TO BEAM HANGERS.

ROOF VENTS:  
 CONTINUOUS RIDGE VENTS OR  
 1" x 8" ROUND ROOF VENTS (50 SQ. IN. EACH)  
 SOFFIT VENTS:  
 1" x 4" SOFFIT VENTS (50 SQ. IN. EACH)  
 NOTE: DOUBLE 2x12" HEADER TYPICAL ALL OPENINGS EXCEPT WHERE OTHERWISE NOTED.

DATE: 06/30/10	PLAN# P9-10068
REVISED	SHEET NUMBER
1	12
2	OF
3	22
4	
5	

ROOF FRAMING PLAN  
 SCALE: 1/4" = 1'-0"



REAR ELEVATION  
SCALE: 1/4" = 1'-0"



FRONT ELEVATION  
SCALE: 1/4" = 1'-0"

DATE: 06/30/10	PLAN# P9-10068
REVISED	SHEET NUMBER
▲	13 / OF 22
▲	
▲	
▲	
▲	
▲	

© Copyright 2007 PROFORMAL DESIGN, INC.



RIGHT ELEVATION

SCALE: 1/4" = 1'-0"



LEFT ELEVATION

SCALE: 1/4" = 1'-0"

DATE: 06/30/10	PLAN# P9-10068
REVISED	SHEET NUMBER
▲	14 / OF 22
▲	
▲	
▲	
▲	
▲	